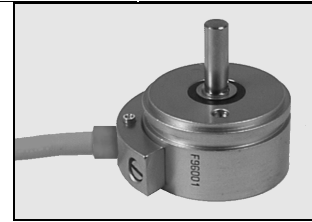


Precision - Wirewound - Potentiometer DP113 Sy



Synchro-flange 13

A potentiometer for harsh industrial conditions. The noble metal winding provides the highest protection against environmental conditions. The multiple taper ensures a safe function. Available with solder connection as an option. Due to the ball bearing axial loads of 5 kp can be taken up by the shaft in continuous operation. The potentiometer is through-rotating, but can also be provided with stops on request. Optionally it can be provided with an oil filling. To protect it against environmental influences we offer installation in a protective housing. Different adapter plates for attachment facilitate the installation at the place of use. Shafts with special lengths can be manufactured individually for single units.



cable connection

mechanical data

- 1.1 housing..... : aluminium
- 1.2 shaft..... : stainless steel $\varnothing 6^{h8}$
- 1.3 bearing..... : ball bearing
- 1.4 resistor element..... : up to 5 K-Ohm noble metal winding
: > 5 K-Ohm precision wire winding
- 1.5 slider tap / wiper tap..... : noble metal, multiple
- 1.6 housing protection class..... : IP 64
- 1.7 type of connection..... : according to table
- 1.8 mounted by..... : clamping claws
- 1.9 electrical rotation angle..... : $345^{\circ} - 1^{\circ} + 2^{\circ}$
- 1.10 mechanical rotation angle..... : standard throughrotation
- 1.11 rotation speed..... : max. 60 rpm
- 1.12 torque..... : 0,3 to 0,4 Ncm
- 1.13 rotation load life..... : 10×10^6 slider path (360°)
- 1.14 end-stop strength..... : 50 Ncm

electrical data

- 2.1 resistance values, standard..... : 1, 2, 5, 10 K-Ohm
- 2.2 resistance values, max. possible : 60 K-Ohm
- 2.3 resistance tolerance..... : $\pm 3\%$
- 2.4 lowest starting resistance..... : 0,05% of overall resistance
- 2.5 linearity tolerance..... : $\pm 0,3\%$
- 2.6 insulation resistance..... : 20 M-Ohm
- 2.7 test voltage..... : 500 V, 50 Hz
- 2.8 operating voltage..... : max. 50 V
- 2.9 power rating..... : max. 2 Watt
- 2.10 slider load current..... : 1 mA (max., load life)
- 2.11 temperature range..... : -50°C till $+100^{\circ}\text{C}$
- 2.12 temperature coefficient..... : 20 ppm/°C

options

- short-circuit tracks
- centre tap
- rotation angle, electrical and mechanical
- resistance tolerance: $\pm 1\%$
- shaft: special length, continuous stops (rotation angle max. 345°)
- slip coupling
- oil filling
- protection class IP65
- protection class IP67 with cable connection only

other types

- multiple version
- cable connection
- clamp connection
- integrated measuring transducer 0/4...20 mA

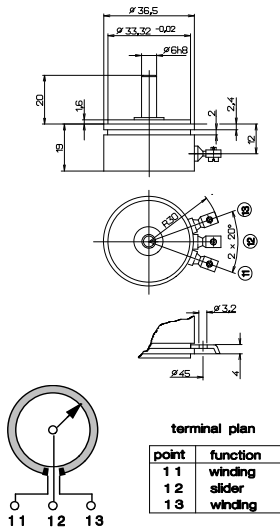
accessories

- protective housing
- adapter plate
- bellows coupling
- pin coupling
- microswitch
- rotary knob
- scale

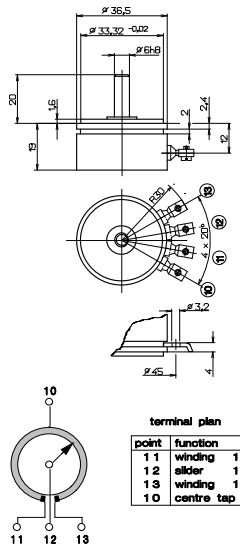
Order#	Type
11100	DP113 Sy KL
11075	DP113 Sy Ka

Order#	Centre tap
11352	$+0,5^{\circ} / -0,5^{\circ}$
11353	$+1,5^{\circ} / -1,5^{\circ}$
11357	$+3^{\circ} / -3^{\circ}$
11354	$+6^{\circ} / -6^{\circ}$

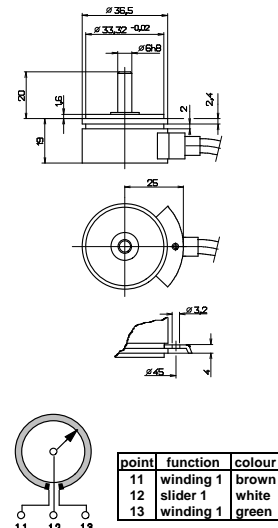
Options	Torque
Standard	till 0,4 Ncm
Oil filling	till 2,5 Ncm
Sensor	till 0,4 Ncm
Shaft on both sides	till 2,0 Ncm



DP113 Sy KL
Standard



DP113 Sy KL
+ Centre tap



DP113 Sy Ka
Standard

Sheet #: KE1121.doc

Amendment/ Print: 25.08.11 / 29.08.11

Order #: according to table

ALTMANN Potentiometer

Herringhauser Straße 29
32051 Herford - Germany

P.O. Box 11 42
32001 Herford - Germany

Phone: 05221/3404-0
Fax : 05221/3404-29

www.altmann-gmbh.de
eMail: info@altmann-gmbh.de

Subject to technical
amendments Form.#: 00000000